

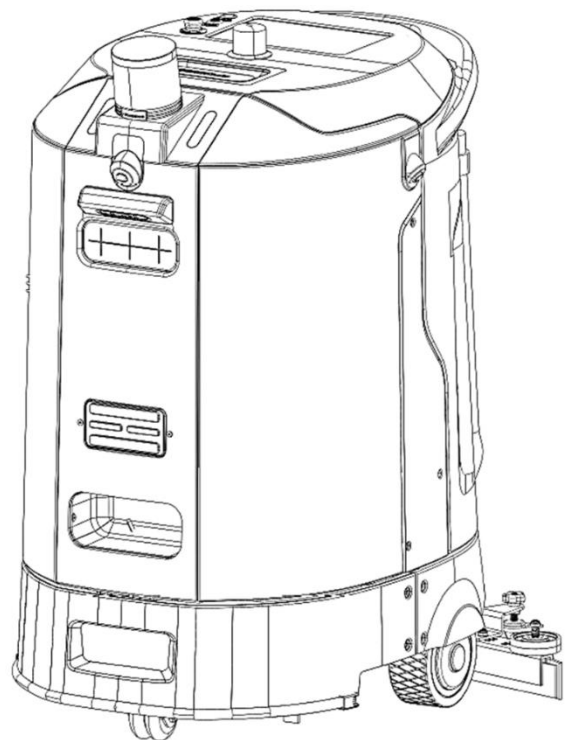
Print Number:

Print Date:

ANB450 Autonomous Scrubber Dryer

PARTS MANUAL

591546020101



Version: V02

Truck Identification Number From:

Parts Manual

ANB450-PM02EN

Please order spare parts from authorized dealers of our Company.

In order to avoid wrong delivery, all the orders for spare parts should specify the following items:

- Truck model, identification number and manufacture year.
- Orders for spare parts of mast, hydraulic transmission unit, steering axle, motor, etc. shall indicate the manufacture number of these parts.
- Codes for Our Company spare parts are shown in the table of parts manual. Please also pay attention to the description of supply status, order quantity, etc. (check the number listed in "Mark" column of the parts manual).

"Mark" Column:

The unmarked indicates the parts are in short supply cycle.

Number 1: supply as package. Indicating these that parts are small parts and seal parts, which are supplied in package unit and in short supply cycle.

Number 2: supply with constraints. Indicating that these spare parts are not in stock and will be prepared for production after receiving the order from customers, which are in long supply cycle.

Number 3: phasing-out supply. Indicating that these parts will be replaced by new parts due to technical improvements and the current stock will not be available when these parts run out. Please check the description of technical improvements notice.

Number 4: supply as assembly. Indicating that these parts are assembly parts defined by manufacture process, which cannot be supplied as a single part.

Number 5: check other tables.

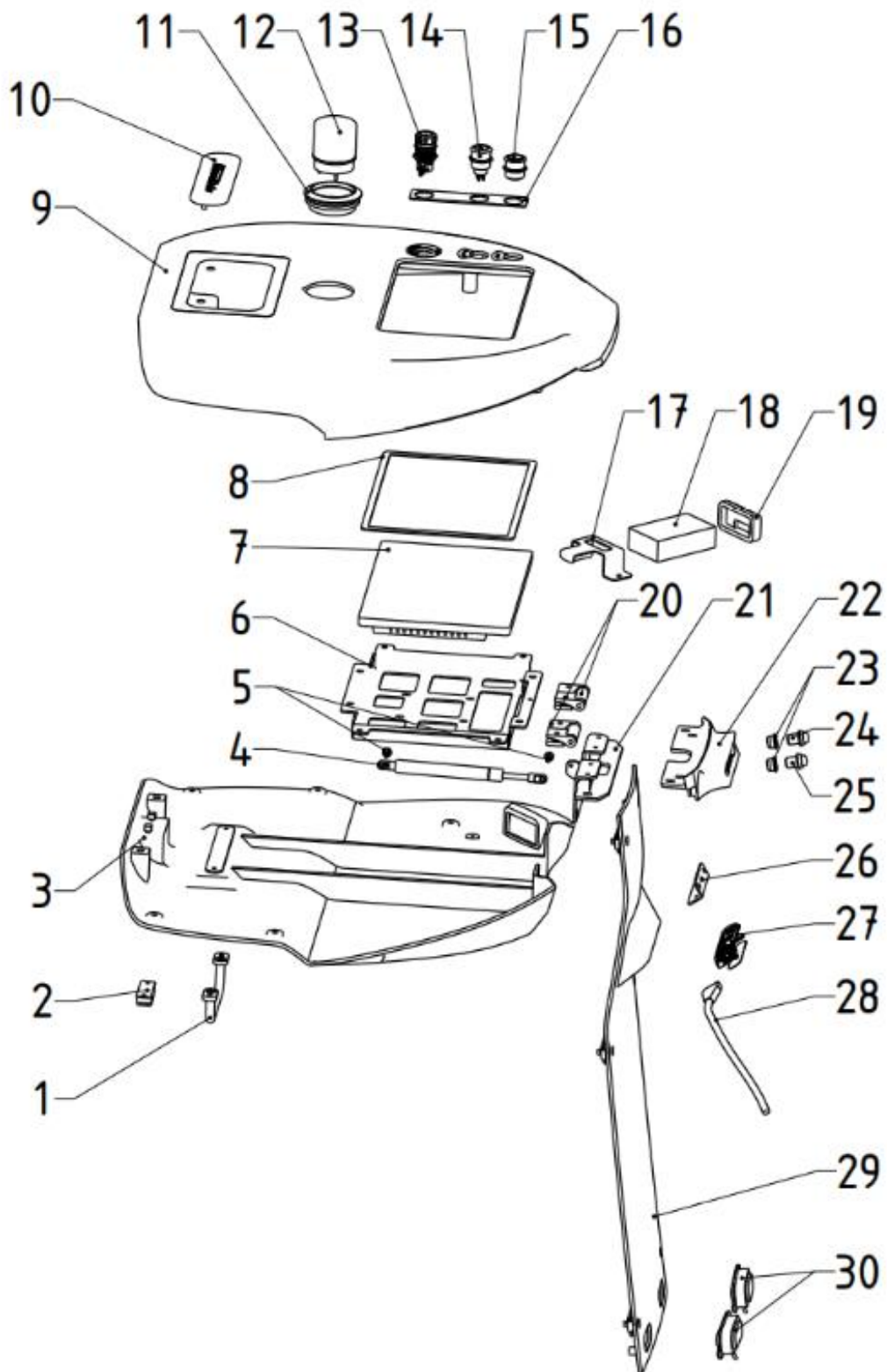
This parts manual is the property of Our Company and can be shared under the confidential agreement only, Our Company has the right to claim for compensation of any unauthorized use. Copy without permission is not allowed. Figures in the manual are not limited by the original design. our Company reserves the right to improve the products for continuous technology progress.

Table of Contents

Chapter 1: Body Structure	2
01 Control Panel (591546021501)	2
02 Water Tank (591546021502).....	4
02 Water Tank (591546021502) Continuation	6
03 Squeegee (591546021503)	8
04 Chassis(591546021504)	10
05 Scrub Head (591546021505)	12
06 Solution Connection (591546021506).....	14
Chapter 2: Electronic Control System.....	16
01 Power System (591546037001)	16
02 Front Control Unit (591546037002).....	18
03 Middle Control Unit (591546037003)	20
04 Automatic Drain Assembly (591546037004)	22
Appendix.....	24
01 Accessories.....	24
02 List Of Consumables.....	24

Chapter 1: Body Structure

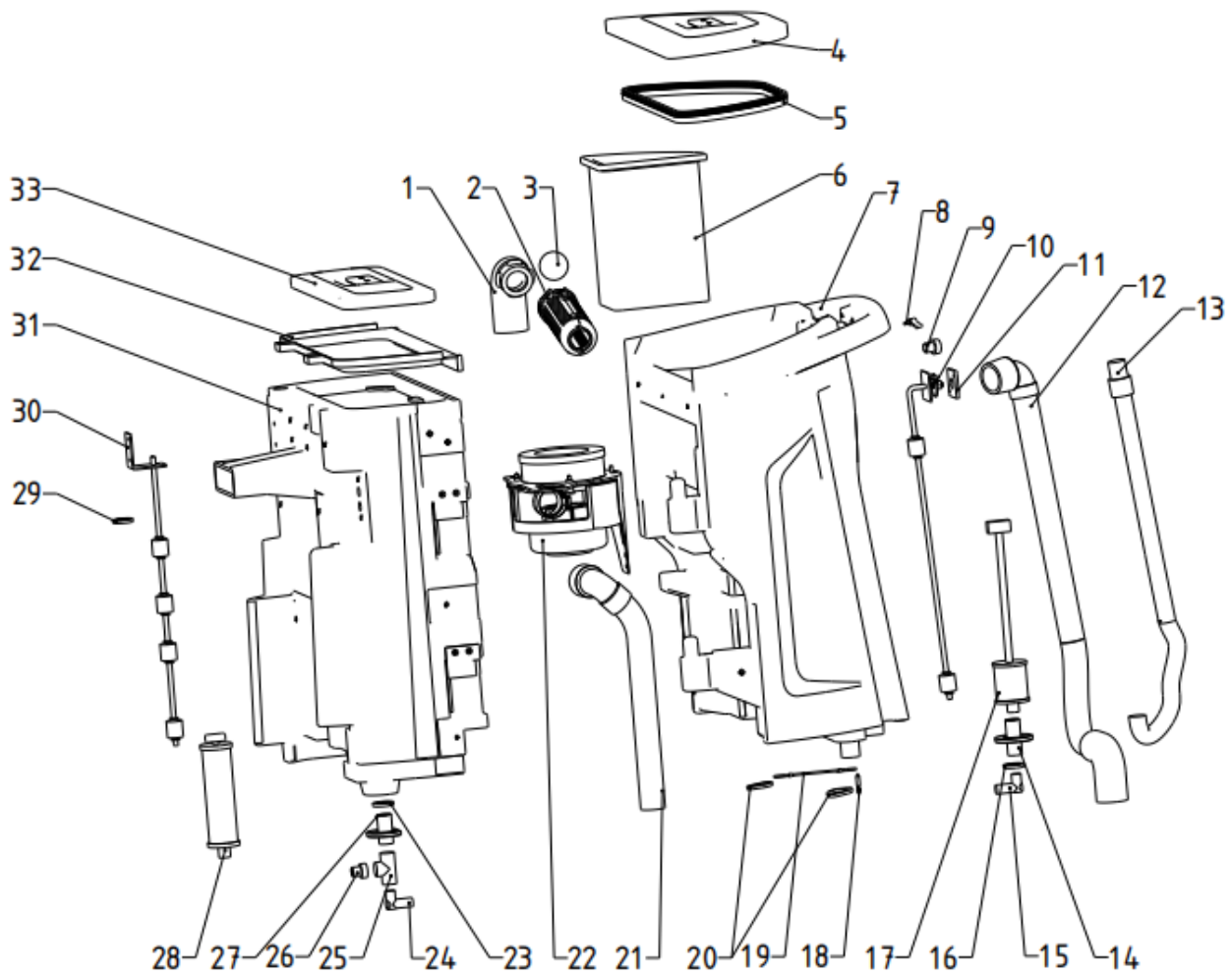
01 Control Panel (591546021501)



01 Control Panel (591546021501)

No.	Item Code	Mark	Item Description	Qty.	Substitute	Note
1	591598520021		Hanger for the Recovery Tank Lid, SUS 304	1		
2	590998520287		Magnet for the Machine Top Cover	1		
3	591598520105		Lower Cover, Machine's Top Cover	1		
4	590998520161		Nitrogen Spring, Stroke 100mm, 80N	1		
5	591598520005		Screw for Mounting the Nitrogen Spring, M4	1		
6	591598520104		Mounting Bracket, Touch Screen	1		
7	590998520179		Touch Screen, 24VDC	1		
8	591598520046		Seal Strip for the Touch Screen	1		
9	591598520102		Upper Cover, Machine's Top Cover	1		
10	591598520103		Handle, Top Cover, SUS 304	1		
11	590998520355		Flashing Beacon Base, Rubber	1		
12	590998520139		Flashing Beacon, Yellow, 24VDC	1		
13	591598520133		Emergency Stop Button	1		
14	590998520483		Key Switch	1		
15	590998520477		Auto/Manual Switch Button	1		
16	591598520044		Mounting Bracket, Button	1		
17	591598520106		Bracket, Communication Module	1		
18	591598520029		Communication Module	1		
19	591598520107		Cover, Communication Module, Rubber	1		
20	591598520020		Hinge, Top Cover	2		
21	591598520100		Bracket, Hinge	1		
22	591598520101		Cover, Handle, Rubber	1		
23	591598520095		Seal Ring, Power Assist Button	2		
24	591598520131		Right Power Assist Button	1		
25	591598520132		Left Power Assist Button	1		
26	591598520094		Mounting Bracket, Rear Depth Camera	1		
27	590998520178		Rear Depth Camera	1		
28	590998520146		Cable, Rear Depth Camera	1		
29	591598520093		Machine Rear Cover	1		
30	591598520047		Rear Indicator Light	2		

02 Water Tank (591546021502)

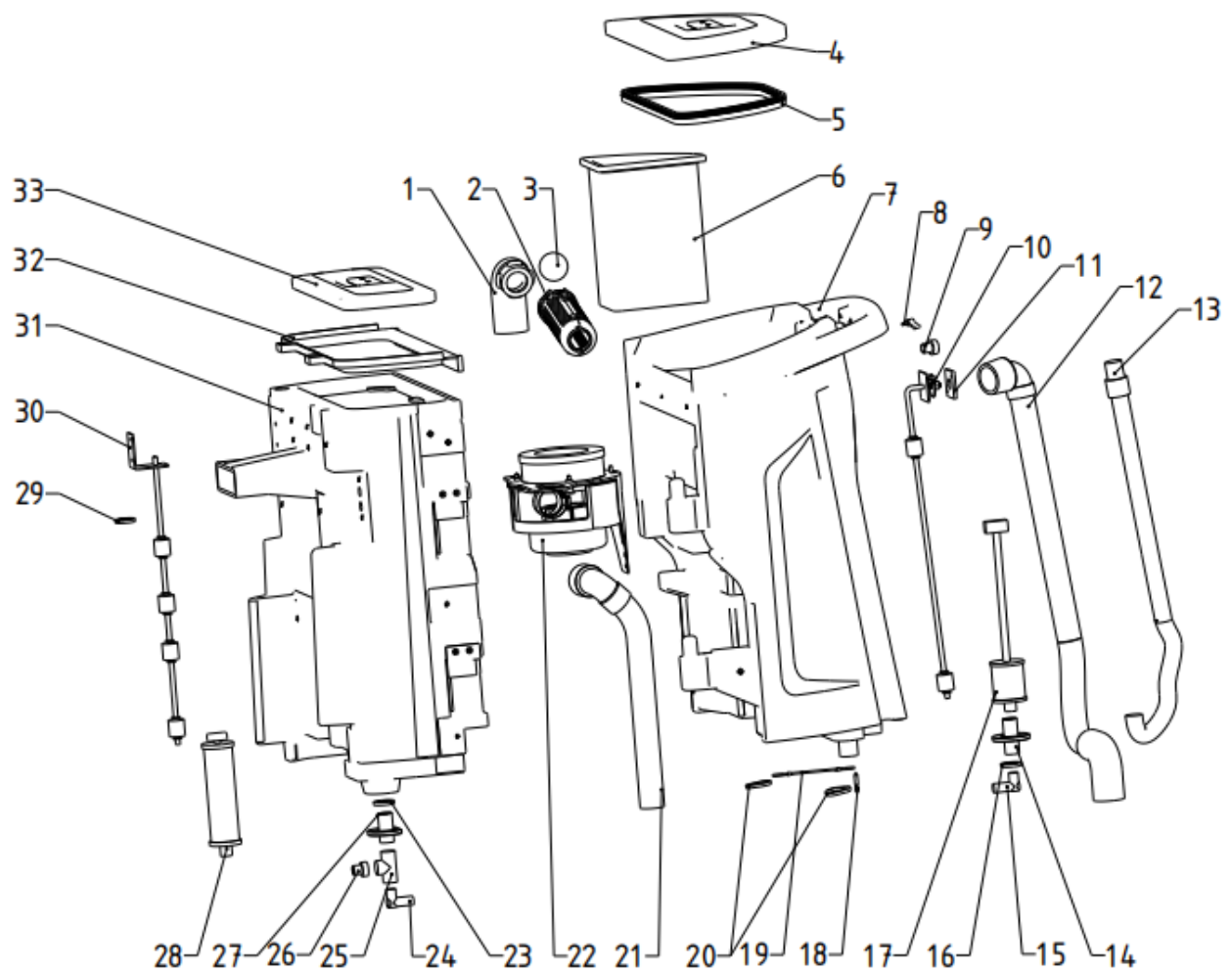


1= Supply as package. 2= Supply with constraints. 3= Phasing-out supply. 4= Supply as assembly. 5= Check other tables.

02 Water Tank (591546021502)

No.	Item Code	Mark	Item Description	Qty.	Substitute	Note
1	591598520082		Vacuum Hose, Tube, Rubber	1		
2	591598520040		Cage, Float Ball	1		
3	591598520041		Float Ball	1		
4	591598520117		Recovery Tank Lid, PE	1		
5	591598520023		Recovery Tank Seal	1		
6	591598520065		Debris Filter Bag	1		
7	591598520063		Recovery Tank, PE	1		
8	591598520022		Latch, Vacuum Hose	1		
9	591598520134		Vacuum Sensor	1		
10	591598520129		Recovery Tank Float Sensor	1		
11	591598520045		Sealing Plate, Recovery Tank Float Sensor,	1		
12	591598520011		Vacuum Hose	1		
13	591598520014		Corrugated Recovery Tank Drain Hose	1		
14	591598520080		Straight Fitting, Recovery Tank Filter Base	1		
15	590998520263		Elbow Fitting, G1/2-16mm	1		
16	591598520071		O-ring Plate, Rubber	1		
17	591598520075		Recovery Tank Filter	1		
18	591598520018		Pull Ring, Recovery Tank	1		
19	591598520081		Limit Wire Rope, Recovery Tank	1		
20	591598520019		Buckle, Recovery Tank, SUS 304	2		
21	591598520010		Muffler, Exhaust, Vacuum Motor	1		
22	591598520118		Vacuum Motor, 24VDC(Without Plastic Housing)	1		
23	591598520071		O-ring Plate, Rubber	1		
24	590998520263		Elbow Fitting, G1/2-16mm	1		
25	591598520012		Tee Fitting	1		
26	591598520013		Straight Fitting, G1/2-16mm	1		
27	591598520079		Straight Fitting	1		
28	591598520076		Solution Tank Filter	1		
29	591598520074		Mark of Max. Water level, Rubber	1		
30	591598520127		Solution Tank Float Sensor	1		

02 Water Tank (591546021502) Continuation

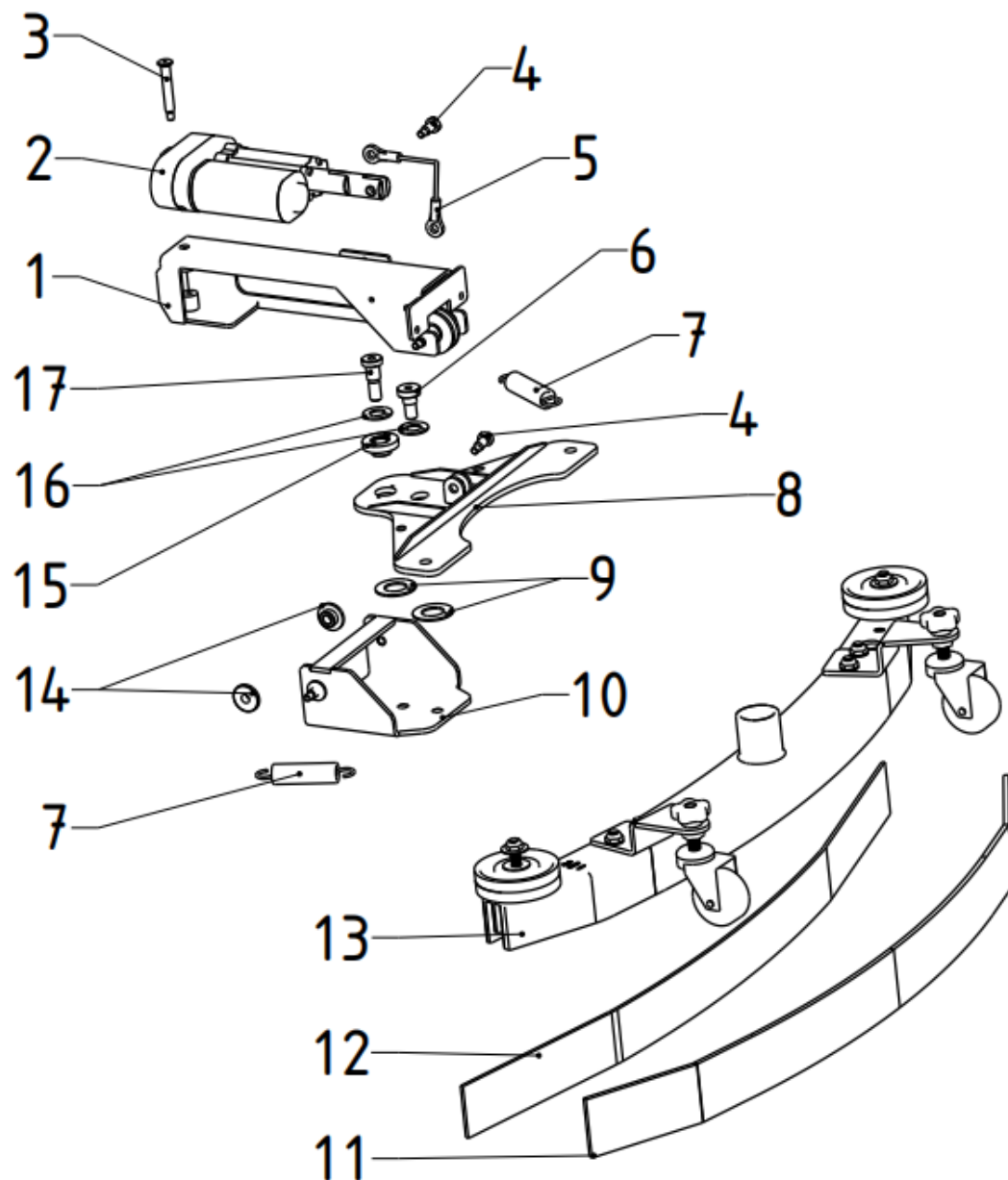


1= Supply as package. 2= Supply with constraints. 3= Phasing-out supply. 4= Supply as assembly. 5= Check other tables.

02 Water Tank (591546021502) Continuation

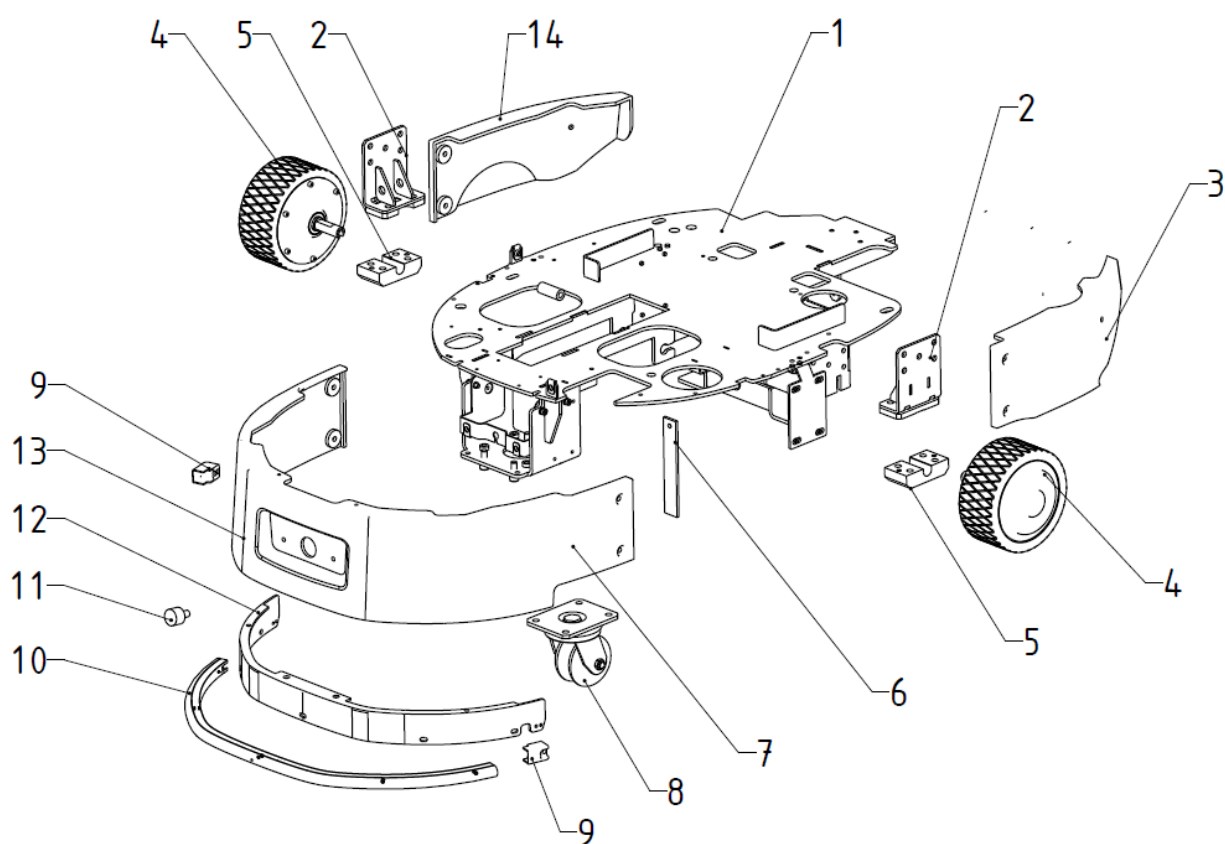
No.	Item Code	Mark	Item Description	Qty.	Substitute	Note
31	591598520064		Solution Tank, PE	1		
32	591598520072		Rubber Mat, Solution Tank	1		
33	591598520119		Solution Tank Lid, PE	1		

03 Squeegee (591546021503)



03 Squeegee (591546021503)

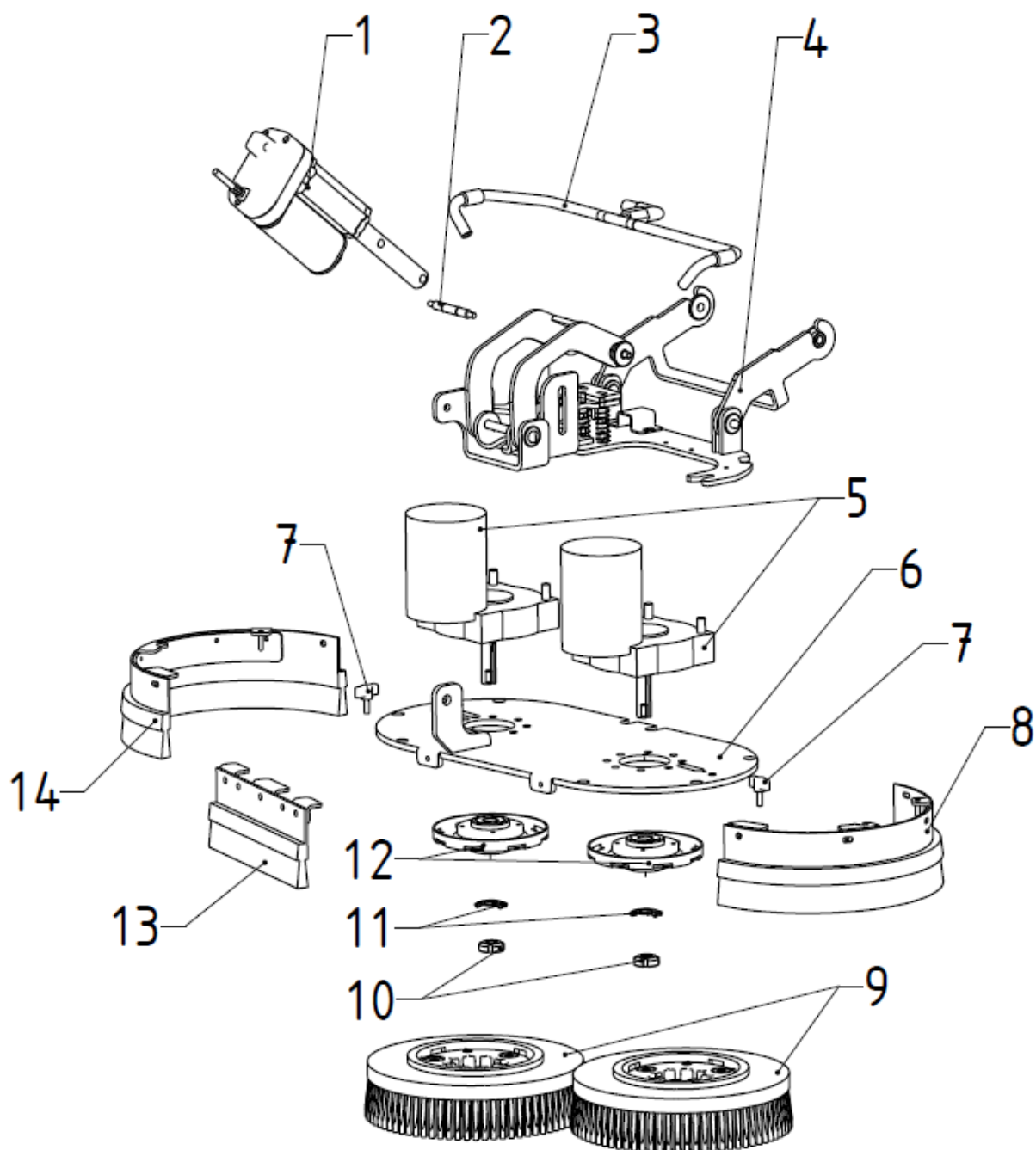
No.	Item Code	Mark	Item Description	Qty.	Substitute	Note
1	591598520060		Mounting Bracket, Electric Linear Actuator	1		
2	591598520032		Electric Linear Actuator, Stroke 35mm,24VDC	1		
3	591598520004		Pin, 8-45	1		
4	591598520003		Pin, 8-25	2		
5	591598520055		Chain Sling for Lifting Squeegee	1		
6	591598520036		Pin, 12-8	1		
7	591598520009		Spring	2		
8	591598520056		Bracket, Squeegee, Width	1		
9	591598520008		Washer, ø 18	2		
10	591598520057		Bracket, Squeegee, Lift	1		
11	591598520058		Rear Squeegee Blade, LINATEX®(Red), 740*	1		
12	591598520059		Front Squeegee Blade, LINATEX®(Red), 740 *	1		
13	591598520024		Squeegee, 740mm	1		
14	591598520006		Bushing	2		
15	591598520043		Bushing	1		
16	591598520007		Washer, ø 12	2		
17	591598520015		Pin 12-14.2	2		

04 Chassis(591546021504)

04 Chassis (591546021504)

No.	Item Code	Mark	Item Description	Qty.	Substitute	Note
1	591598520048		Main Frame	1		
2	591598520049		Mounting Bracket, Drive Wheel	2		
3	591598520111		Left Rear Cover, Chassis, PE	1		
4	591598520147		Drive Wheel	2		
5	590998520314		Mounting Clamp, Drive Wheel	2		
6	591598520054		Grounding Strip, Rubber	1		
7	591598520109		Front Cover, Chassis, PE	1		
8	591598520016		Castor, 3 inches	1		
9	591598520112		Bumper Sensor Clamp, Plastic	2		
10	591598520028		Bumper Sensor	1		
11	591598520130		Bottom Light 24VDC 10W	1		
12	591598520108		Mounting Bracket, Bumper Sensor	1		
13	591598520110		Right Rear Cover, Chassis, PE	1		

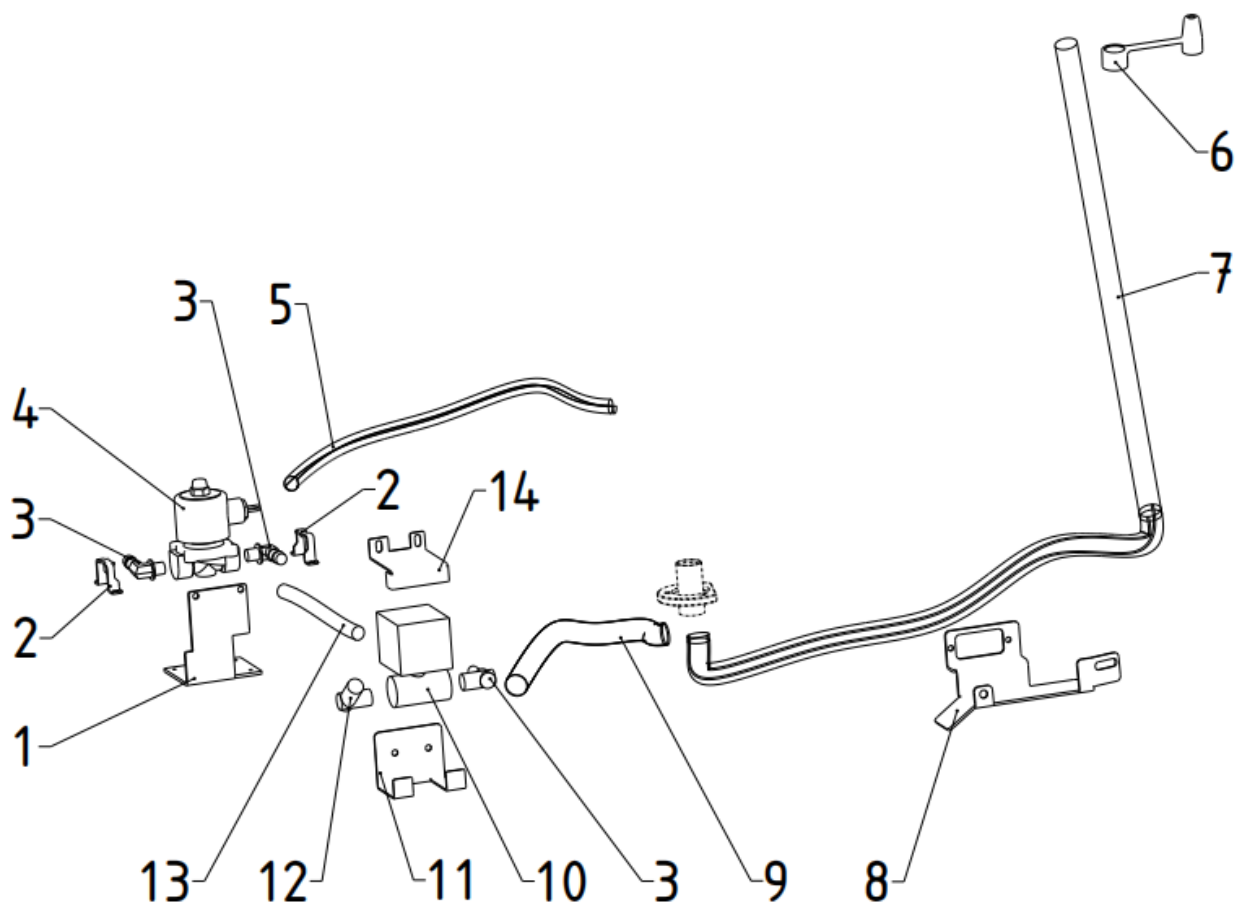
05 Scrub Head (591546021505)



05 Scrub Head (591546021505)

No.	Item Code	Mark	Item Description	Qty.	Substitute	Note
1	591598520034		Electric Linear Actuator, Stroke 70mm,24VDC	1		
2	591598520062		Pin	1		
3	591598520120		Solution Hose, Scrub Head	1		
4	591598520121		Lifting Structure	1		
5	591598520031		Brush Motor, 24VDC, 200W	2		
6	591598520061		Mounting Plate, Brush Motor	1		
7	591598520017		T-handle Knob, Side Skirt	2		
8	591598520122		Left Side Skirt	1		
9	591598520125		Disk Brush*	2		
10	591598520001		Lock Nut, Brush Hub	2		
11	591598520002		Lock Washer, Brush Hub	2		
12	591598520126		Brush Hub	2		
13	591598520123		Front Skirt	1		
14	591598520124		Right Side Skirt	1		

06 Solution Connection (591546021506)

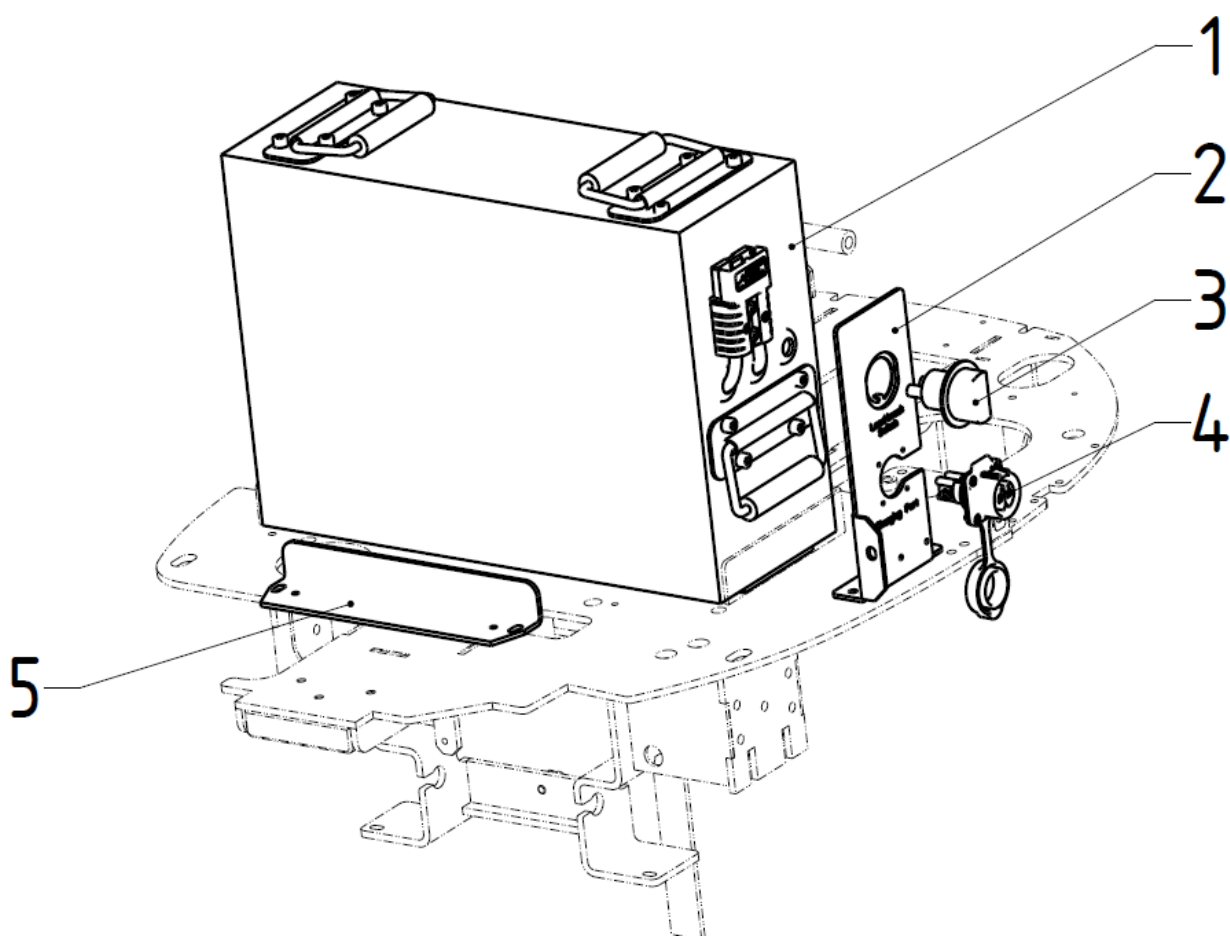


06 Solution Connection (591546021506)

No.	Item Code	Mark	Item Description	Qty.	Substitute	Note
1	591598520077		Mounting Bracket	1		
2	591598520078		Bracket, Solution Tank Drain Hose	2		
3	590998520266		Elbow Fitting, G1/2-12	3		
4	590998520152		Electric Ball Valve, 24VDC	1		
5	590998520264		Solution Hose, Scrub Head, 0.58m	1		
6	591598520083		Drain Hose Cap, Solution Tank	2		
7	591598520038		Drain Hose, Solution Tank	1		
8	591598520084		Drain Hose Bracket	1		
9	590998520265		Solution Hose, Solution Tank, Solenoid Valve, 0.2m	1		
10	590998520153		Solenoid Valve, 24VDC	1		
11	591598520073		Lower Mounting Bracket, Solenoid Valve	1		
12	590998520263		Elbow Fitting, G1/2-16	1		
13	590998520264		Solution Hose, 0.18m	1		
14	591598520069		Upper Mounting Bracket, Solenoid Valve	1		

Chapter 2: Electronic Control System

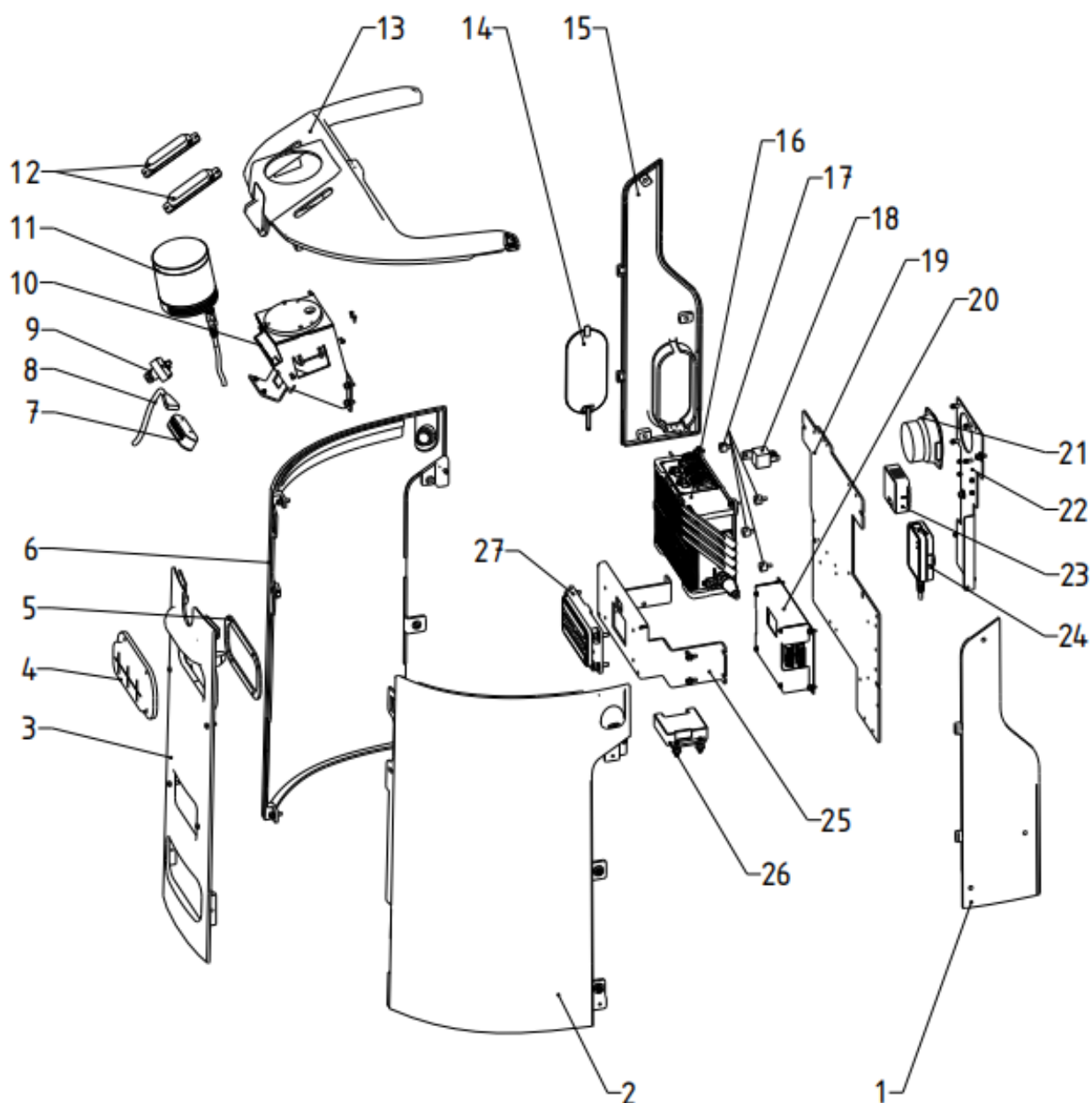
01 Power System (591546037001)



01 Power System (591546037001)

No.	Item Code	Mark	Item Description	Qty.	Substitute	Note
1	591598520025		Lithium Iron Phosphate Battery,25.6VDC 70Ah	1		
2	591598520097		Mounting Bracket, Load Break Switch and Manual Charging Connector	1		
3	591598520027		Load-break Switch, 24VDC 200A	1		
4	590998520302		Manual Charging Connector	1		
5	591598520050		Mounting Bracket, Battery	1		

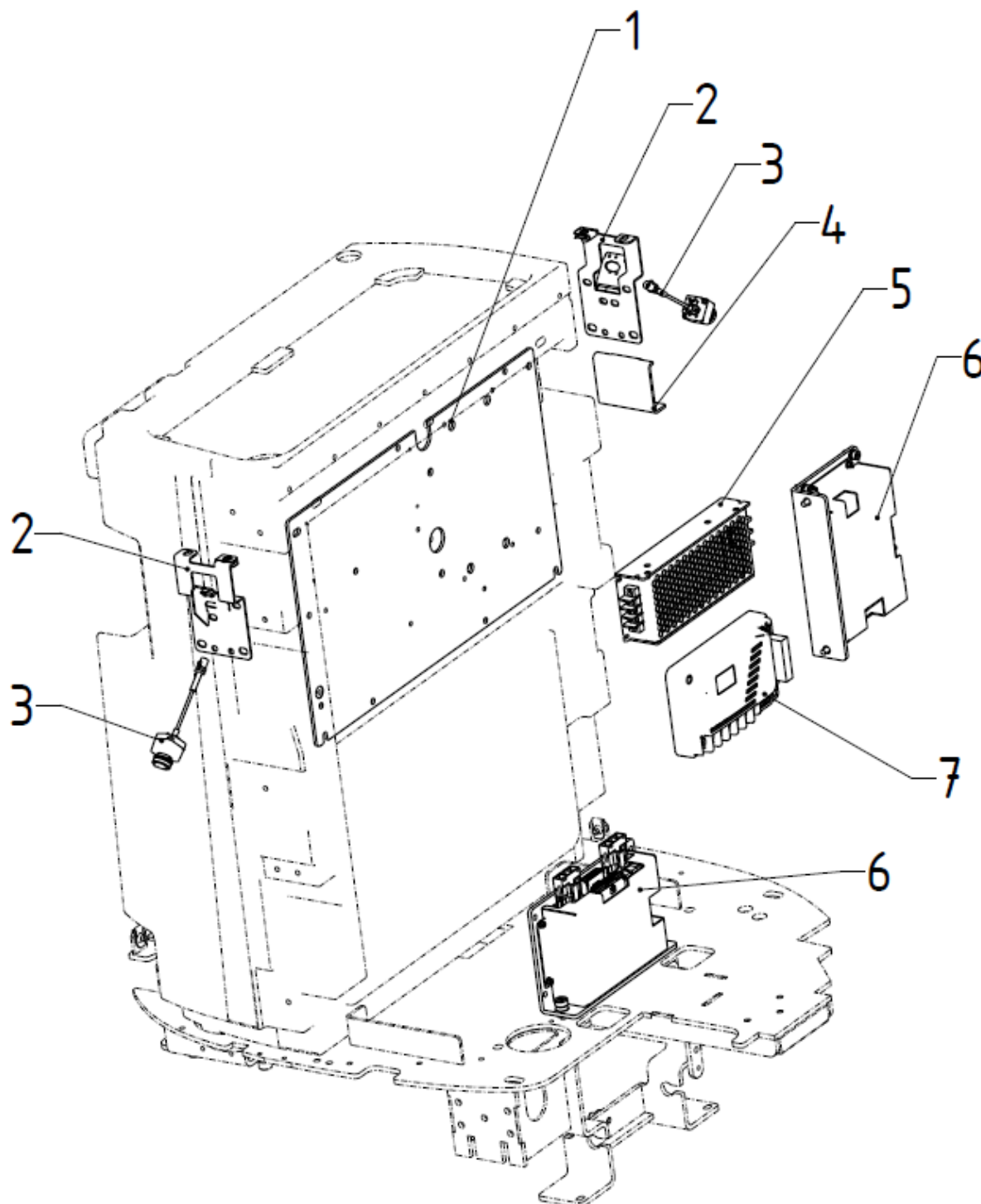
02 Front Control Unit (591546037002)



02 Front Control Unit (591546037002)

No.	Item Code	Mark	Item Description	Qty.	Substitute	Note
1	591598520068		Left Cover, Plastic	1		
2	591598520088		Left Front Cover, Plastic	1		
3	591598520086		Front Cover, Plastic	1		
4	590998520419		Shield, Auto Water Filling Inlet, Rubber	1		
5	591598520042		Clamp Plate, Shield, Auto Water Filling Inlet	1		
6	591598520087		Right Front Cover, Plastic	1		
7	590998520178		Front Depth Sensor, 5VDC	1		
8	590998520145		Cable, Front Depth Sensor	1		
9	590998520180		Front Camera, 5VDC	1		
10	591598520113		Mounting Bracket, 3D LiDAR	1		
11	590998520186		3D LiDAR, 24VDC	1		
12	591598520128		Front Indicator Light, 24VDC	2		
13	591598520089		Front Top Cover, Plastic	1		
14	591598520114		Cover for the Load Switch, Plastic	1		
15	591598520115		Right Cover, Plastic	1		
16	590998520189		ACU, 24VDC	1		
17	590998520250		Rubber Bushing, ACU	4		
18	590998520176		Contactor, 24VDC,40A	1		
19	591598520052		Mounting Bracket, ACU and ECU	1		
20	590998520472		ECU, 24VDC (Without Housing)	1		
21	590998520307		Speaker, 24VDC	1		
22	591598520051		Bracket, Speaker	1		
23	590998520469		Speaker Power Amplifier (Without Housing)	1		
24	590998520309		3D LiDAR Controller Box (with Cable), 24VDC	1		
25	591598520053		Bracket, Charging Plates	1		
26	590998520470		IMU Sensor (Without Housing)	1		
27	591598520116		Charging Plates, Automatic Charging	1		

03 Middle Control Unit (591546037003)

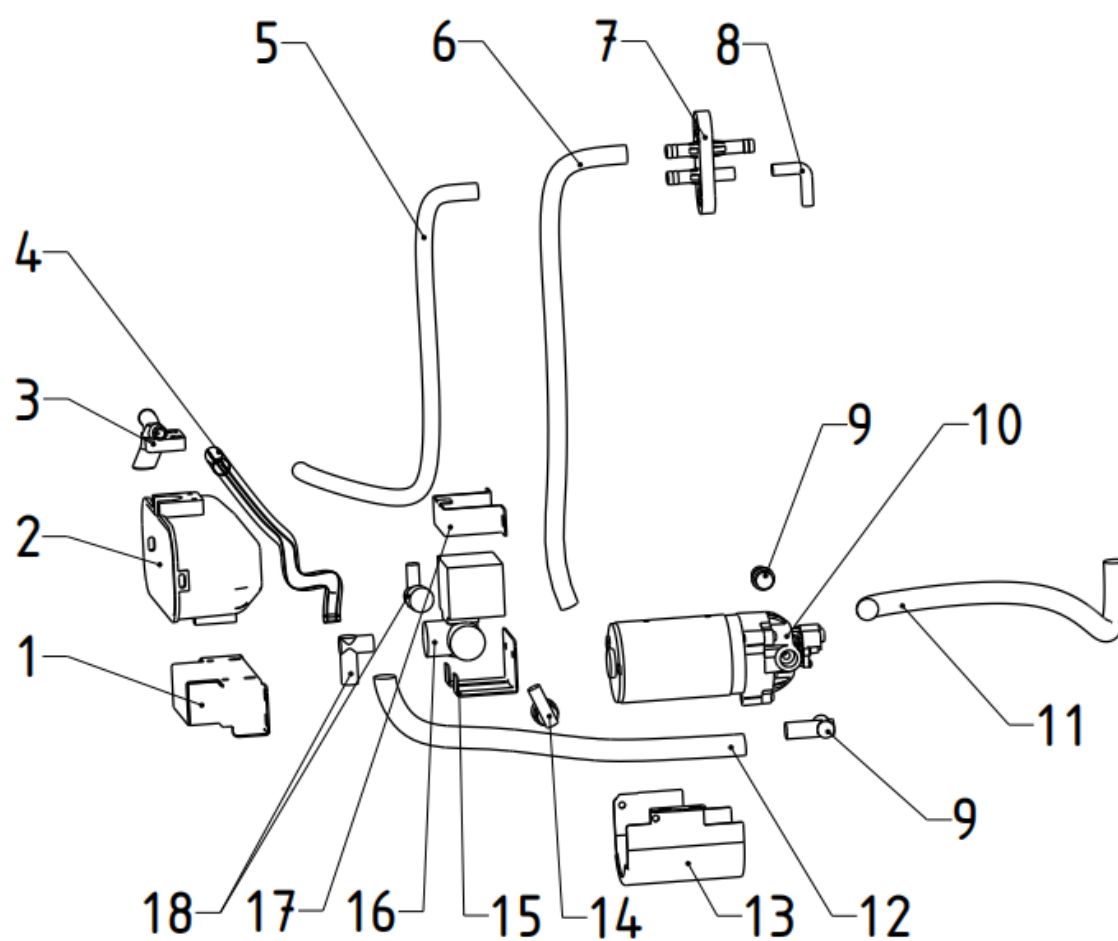


1= Supply as package. 2= Supply with constraints. 3= Phasing-out supply. 4= Supply as assembly. 5= Check other tables.

03 Middle Control Unit (591546037003)

No.	Item Code	Mark	Item Description	Qty.	Substitute	Note
1	591598520096		Mounting Bracket, DC-DC, MCU	1		
2	591598520098		Mounting Bracket, Right Camera	2		
3	590998520181		Camera, 5VDC	2		
4	591598520099		Bracket	1		
5	590998520297		DC-DC Converter Module, 24VDC, 100W	1		
6	590998520471		Motor Controller, Drive Wheel, Disk Brush Motor, 24VDC (Without Housing)	2		
7	591598520026		Motor Controller, Pump, Vacuum Motor, 24VDC	1		

04 Automatic Drain Assembly (591546037004)



04 Automatic Drain Assembly (591546037004)

No.	Item Code	Mark	Item Description	Qty.	Substitute	Note
1	591598520091		Mounting Plate, Drain Port Housing	1		
2	591598520090		Drain Port Housing, Plastic	1		
3	591598520092		Y-fitting	1		
4	590998520265		Spiral Hose, Automatic Draining, 0.74m	1		
5	590998520264		Braided Hose, Automatic Draining, 0.48m	1		
6	590998520264		Braided Hose, Overflow, 0.53m	1		
7	591598520085		Overflow Fitting	1		
8	591598520039		Overflow Bend Hose, Rubber	1		
9	591598520037		Elbow Fitting, G3/8 -16	2		
10	591598520030		Drain Pump, 24VDC	1		
11	590998520265		Braided Hose, Recovery Tank, Pump, 0.55m	1		
12	590998520265		Braided Hose, Pump, Electric Ball Valve, 0.41m	1		
13	591598520070		Mounting Bracket, Pump	1		
14	590998520266		Elbow Fitting, G1/2-12	1		
15	591598520066		Mounting Bracket, Electric Ball Valve	1		
16	591598520033		Electric Ball Valve, 24VDC	1		
17	591598520067		Mounting Clamp, Electric Ball Valve	1		
18	590998520263		Elbow Fitting, G1/2-16	2		

Appendix

01 Accessories

No.	Item Code	Item Description	Qty.	Type
1	590998520194	Manual Charger, 100~240VAC, 28.8VDC 30A	1	Standard
2	591598520139	Pad Driver	2	Standard
3	590998520512	Maintenance Brush	1	Standard
4	590998520511	Vacuum Hose Cleaning Tool	1	Standard

02 List Of Consumables

No.	Item Code	Item Description	Qty.	Chapter/ Section/ Number
1	591598520125	Disk Brush	2	Chapter /05/09
2	591598520136	Pad, Red	2	-
3	591598520135	Pad, White	2	-
4	591598520059	Front Squeegee Blade, LINATEX®(Red),740	1	Chapter /03/12
5	591598520058	Rear Squeegee Blade, LINATEX®(Red),740	1	Chapter /03/11
6	591598520138	Front Squeegee Blade, PRIMOthane®(Blue),740	1	-
7	591598520137	Rear Squeegee Blade, PRIMOthane®(Blue),740	1	-
8	591598520065	Debris Filter Bag	1	Chapter /02/06
9	591598520075	Recovery Tank Filter	1	Chapter /02/17